

REAL ALES

AVAILABLE TO REQUEST ALL YEAR ROUND

Oakham JHB 3.8% ABV
Oakham Ales, Cambridgeshire. Est. 1993
This light golden beer has an aroma dominated by citrus notes, while its hops and fruit on the palate are balanced by malty notes and a bitter base, leading to soft fruit flavours and a refreshing, dry, hoppy finish.
Hops: Challenger, Mount Hood



Wainwright Gold 4.1% ABV
Banks's Brewery, West Midlands. Est. 1890
This straw-coloured beer has a subtle sweetness supplied by sweet honey notes, complemented by delicate citrus fruit overtones, resulting in a balanced, refreshing character.
Hops: Hersbrücker, Magnum, Styrian Goldings, Tradition



Brains SA 4.2% ABV
Brains Brewery, Cardiff. Est. 1882
This copper-coloured beer has an inviting malty aroma, leading to a blend of nutty richness, with malty and intense fruit notes, balanced by a satisfying dryness in its lasting finish.
Hops: Challenger, Fuggles, Goldings



Oakham Citra 4.2% ABV
Oakham Ales, Cambridgeshire. Est. 1993
This refreshing pale golden beer expertly showcases the single-hop variety used, with its pungent aromas of grapefruit, lychee and gooseberry leading to a dry, bitter finish.
Hops: Citra



Wychwood Hobgoblin Gold 4.2% ABV
Banks's Brewery, West Midlands. Est. 1890
This golden beer delivers tropical citrus and passion fruit aromas, leading to biscuit malt flavours which are complemented by fresh lemon and lime zest, resulting in a refreshing character.
Hops: Citra, Nelson Sauvin, Pilgrim, Summit



Adnams Ghost Ship 4.5% ABV
Adnams Brewery, Suffolk. Est. 1872
This golden pale ale has aromatic elderflower notes, leading to bold citrus flavours of lemon and lime, supported by a subtle malt backbone and resulting in a refreshing hoppy finish.
Hops: Cascade, Chinook, Citra



Brains The Rev James Original 4.5% ABV
Brains Brewery, Cardiff. Est. 1882
This mahogany-coloured beer has a spicy toffee aroma, followed by a rich, balanced character, with a mellow, malty flavour which gives way to a clean, refreshing finish.
Hops: Challenger, Fuggles, Goldings



Exmoor Gold 4.5% ABV
Exmoor Ales, Somerset. Est. 1980
This classic golden beer has a soft malty aroma, with hints of citrus hops, while the subtle malt sweetness in its flavour leads to a refreshing, bittersweet finish of citrus, toffee and vanilla.
Hops: Celeia, Challenger, Fuggles, Goldings



Morland Old Speckled Hen 4.5% ABV
Greene King Brewery, Suffolk. Est. 1799
This copper-coloured beer has a superb fruity aroma, with its warming malt and toffee character balanced by fruity notes and hints of caramel, leading to a smooth finish.
Hops: Challenger, First Gold, Goldings



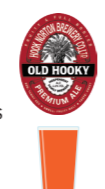
Wychwood Hobgoblin Ruby 4.5% ABV
Marston's Brewery, Staffordshire. Est. 1834
This ruby-coloured ale has fruit and sweet caramel aromas, leading to a rich, full-bodied toffee flavour and a fruity finish, with notes of figs, raisins and dates.
Hops: Fuggles, Goldings, Styrian



Fire Island Buffalo 4.6% ABV
Evan Evans Brewery, Carmarthenshire. Est. 2004
This deep amber beer is gluten free. Its inviting tropical fruit aroma is complemented by a rich, full-bodied malt flavour and balanced by hedgerow fruit notes.
Hops: Cascade, Chinook, Magnum, Progress



Hook Norton Old Hooky 4.6% ABV
Hook Norton Brewery, Oxfordshire. Est. 1849
This popular tawny-red bitter has a strong, fruity, malty aroma and palate, with a balance of subtle hoppiness and hints of crystal malt, creating a well-rounded, slightly sweet character.
Hops: Challenger, Fuggles, Goldings



Adnams Broadside 4.7% ABV
Adnams Brewery, Suffolk. Est. 1872
This classic beer is a deep ruby colour, rich in fruit cake aromas, with hints of almond and fruit in the smooth, malty flavour, leading to a balanced, lasting finish.
Hops: Pilgrim



Ringwood Fortyniner 4.9% ABV
Banks's Brewery, West Midlands. Est. 1890
This golden-brown beer has a light, fresh, floral aroma, with a rounded malt flavour, balanced by a moderate bitterness which leads to pleasing bittersweet notes in the finish.
Hops: Challenger, Fuggles, Goldings, Progress, Sovereign



Titanic Plum Porter 4.9% ABV
Titanic Brewery, Staffordshire. Est. 1985
This multiaward-winning deep red ale has a well-rounded flavour, with its sweet fruity notes balanced by an underlying hoppiness, resulting in a surprisingly easy-drinking character.
Hops: Celeia, Goldings, Herkules, Pilgrim



Sharp's Sea Fury 5.0% ABV
Sharp's Brewery, Cornwall. Est. 1994
This ruby-coloured special ale has inviting berry and roast notes in its aroma, leading to a balanced, sumptuous, full malt and fruit flavour, culminating in a pleasing, hoppy finish.
Hops: Aurora, Cascade, Chinook, Motueka



Theakston Old Peculier 5.6% ABV
Theakston Brewery, North Yorkshire. Est. 1827
This dark ruby beer is one of the world's classic beers. It has a rich, full-bodied flavour, with subtle cherry and rich fruit overtones, plus a smooth, lasting finish.
Hops: Challenger, Fuggles, Target



Marston's Old Empire IPA 5.7% ABV
Marston's Brewery, Staffordshire. Est. 1834
This golden beer is brewed in the style of a traditional IPA, with plenty of crisp citrus hop aromas, a subtle malt character and generous hop flavours emerging in the bittersweet finish.
Hops: Cascade, Fuggles, Goldings



Thornbridge Jaipur 5.9% ABV
Thornbridge Brewery, Derbyshire. Est. 2005
This straw-coloured IPA delivers a citrus aroma, with its complex hoppiness building to a powerful citrus hop flavour burst, culminating in a balanced and remarkably smooth finish.
Hops: Ahtanum, Cascade, Centennial, Chinook, Columbus, Simcoe



REGULAR REAL ALES

Pubs will have three of the below ales available at all times.

Greene King IPA 3.4% ABV
Greene King Brewery, Suffolk. Est. 1799
This easy-drinking amber ale has a fresh, dry, hoppy and herbal character, while its addition of crystal malt delivers satisfying toffee and caramel notes, resulting in a clean, dry finish.
Hops: Challenger, First Gold, Pilgrim



Ruddles Best 3.7% ABV
Greene King Brewery, Suffolk. Est. 1799
This chestnut-coloured beer's blend of hops delivers tropical and berry fruit flavours, with lemon citrus notes, balanced by a warming toffee and caramel character, leading to a crisp bitterness in the finish.
Hops: Bramling Cross, Challenger, Goldings, Target



Belhaven 80 Shilling 3.9% ABV (Scotland only)
Belhaven Brewery, East Lothian. Est. 1719
This copper-coloured beer has a malty character and subtle sweetness, with its hop varieties delivering a balancing bitterness and underlying herbal hop notes, with emerging hints of orange peel.
Hops: Challenger, Goldings



Sharp's Doom Bar 4.0% ABV
Sharp's Brewery, Cornwall. Est. 1994
This amber-coloured ale has an enticing aroma of resinous hops and sweet roasted malt, leading to a balanced flavour of dried fruit and lightly roasted malt, along with a moreish subtle bitterness in the finish.
Hops: Aurora, Perle



Greene King Abbot Ale 5.0% ABV
Greene King Brewery, Suffolk. Est. 1799
Masses of fruit character, with a malty richness and superb hop balance.
Hops: Challenger, First Gold, Fuggles, Pilgrim



REAL-ALE TYPES

Pale; very light; blond; straw
 Golden
 Amber; mid brown
 Dark brown; ruby
 Black; deep ruby; very dark
 for the facts drinkaware.co.uk jdwetherspoon.com

wetherspoon

Real-ale Tasting Notes

JUL-SEP 2024

wetherspoon

Real-ale Tasting Notes

JUL-SEP 2024

WE SUPPORT THE AIMS OF CAMRA

FOR PUBS WHICH SERVE THE PERFECT PINT AT THE PERFECT TEMPERATURE

GOOD BEER GUIDE 2024 236 PUBS

TNOTEJULSEP24

Next beer festival Wed 9 – Sun 20 Oct

Mon 1 – Sun 7 July, limited time only.
Mitch Steele, from New Realm Brewing, returns to brew Hoptropolis IPA.

SEASONAL GUEST ALES AVAILABLE TO REQUEST DURING JUL-SEP

Harviestoun Bitter & Twisted 3.8% ABV

Harviestoun Brewery, Clackmannanshire. Est. 1983
This refreshing golden beer has a fruity aroma, with a delicate balance of hops and caramel malt, leading to a tingling, lemon finish.
Hops: Bobek, Celeia, Challenger, Hallertau Hersbrücker, Perle



St Austell Anthem 3.8% ABV

St Austell Brewery, Cornwall. Est. 1851
This golden pale ale has a bold citrus flavour, along with mango, peach and apricot notes, resulting in a refreshing and easy-drinking character.
Hops: Harlequin, Jester, Olicana, Target



Beartown Bear Ass 4.0% ABV

Beartown Brewery, Cheshire. Est. 1994
This ruby-coloured ale has distinctive hop aroma, leading to a predominantly malty flavour, with plenty of bold fruit notes, balanced by a lasting dry bitterness in the finish.
Hops: Challenger, Northern Brewer



Bowman Wallops Wood 4.0% ABV

Bowman Ales, Hampshire. Est. 2006
This chestnut-coloured beer has a pleasing, delicate aroma, leading to a predominantly malty flavour, balanced by subtle hop notes and a hoppy finish.
Hops: Celeia, Galena, Goldings



Wimbledon SW19 4.0% ABV

Wimbledon Brewery, London. Est. 2015
This straw-coloured ale is brewed with a blend of English and New Zealand hops, resulting in subtle citrus notes, with hints of malt and a crisp, refreshing, satisfying finish.
Hops: Fuggles, Goldings, Nelson Sauvin, Rakau, Taiheke, Waimea



Bradfield Farmers Brown Cow 4.2% ABV

Bradfield Brewery, South Yorkshire. Est. 2005
This rich, deep chestnut-coloured ale has a smooth, creamy head, with its predominant citrus character leading to a long, dry finish.
Hops: Bramling Cross



Brightside Time Bandit 4.2% ABV

Brightside Brewery, Manchester. Est. 2009
This golden ale is brewed with a generous amount of US hops, resulting in plenty of citrusy and fruity notes in its aroma and flavour, balanced by subtle malt notes and leading to a refreshing finish.
Hops: Amarillo, Simcoe



Loddon Hullabaloo 4.2% ABV

Loddon Brewery, Oxfordshire. Est. 2002
This traditional amber-coloured best bitter has a rich and distinctive biscuit malt character, complemented by herbal and citrus hop notes, resulting in a finely balanced flavour.
Hops: Challenger, Fuggles, Styrian Goldings



Nottingham Citra Pale Ale 4.2% ABV

Nottingham Brewery, Nottinghamshire. Est. 2000
This pale golden ale has a full hoppy aroma and plenty of citrus flavour on the palate, leading to a burst of hops on the finish, creating a zesty, refreshing character.
Hops: Bobek, Challenger, Citra, Goldings



Sharp's Atlantic 4.2% ABV

Sharp's Brewery, Cornwall. Est. 1994
This deep golden beer has an aroma of tropical citrus fruits and fresh hops, leading to a balanced fruity flavour (with its delicate sweetness) and a lingering, clean, hoppy finish.
Hops: Aurora, Cascade, Chinook



Southwark Mayflower Session IPA 4.2% ABV

Southwark Brewery, Southwark. Est. 2014
This pale straw-coloured beer has a full citrus aroma which continues onto the palate, balanced by its hoppy flavour, subtle malt notes and a pleasing bitterness in the finish.
Hops: Cascade, Mosaic, Simcoe, Sorachi Ace



Brains SA Gold 4.3% ABV

Brains Brewery, Cardiff. Est. 1882
This full-flavoured golden ale delivers vibrant citrus aromas and complex hop flavours, resulting in a full-flavoured, hoppy, refreshing character.
Hops: Cascade, Styrian Goldings



Wolf Coyote 4.3% ABV

Wolf Brewery, Norfolk. Est. 1995
This amber ale delivers a balanced blend of malt and hop flavours, leading to pleasing caramel undertones and a crisp, thirst-quenching finish.
Hops: Cascade, Celeia, Goldings



Brewster's Decadence 4.4% ABV

Brewster's Brewery, Lincolnshire. Est. 1998
This golden ale has aromas of passion fruit and kiwi, leading to a balance of roast flavours, a subtle malt sweetness and tropical fruit notes, resulting in a crisp, fresh finish.
Hops: Cascade, Chinook, Nelson Sauvin



Glamorgan Jemima's Pitchfork 4.5% ABV

Glamorgan Brewery, Rhondda Cynon Taf. Est. 2011
This award-winning straw-coloured beer has a generous fruity hop aroma, leading to a crisp, refreshing flavour, with undertones of citrus, pear and melon emerging through the lasting finish.
Hops: Bramling Cross, Cascade, Chinook, Eldorado



Lancaster Black 4.5% ABV

Lancaster Brewery, Lancashire. Est. 2005
This black beer, brewed in the style of a classic, traditional stout, has a full floral aroma of spices and fruit, leading to flavours of liquorice and chocolate, along with a smooth velvet character.
Hops: Cascade, Challenger, Perle



Titanic White Star 4.5% ABV

Titanic Brewery, Staffordshire. Est. 1985
This golden-coloured refreshingly hoppy beer has hints of fruit and citrus throughout, balanced by an underlying maltiness, leading to a crisp, hoppy finish.
Hops: Celeia, Fuggles, Pilgrim, Summit, Waimea



Oakham Bishops Farewell 4.6% ABV

Oakham Ales, Cambridgeshire. Est. 1993
This golden, award-winning beer is dominated by elaborate fruity hop notes, complemented by a full-flavoured background and a dry, refreshing finish.
Hops: Cascade, Challenger



Purple Moose Dark Side of the Moose 4.6% ABV

Purple Moose Brewery, Gwynedd. Est. 2005
This award-winning chestnut ale has a fruity aroma, leading to a rich malty flavour, with toffee notes and a crisp, lingering bitterness from its Bramling Cross hops.
Hops: Bramling Cross



Robinsons Trooper 4.7% ABV

Robinsons Brewery, Cheshire. Est. 1838
This golden ale was developed in collaboration with Bruce Dickinson, lead singer of Iron Maiden. This is a full-bodied ale, with a rich malt and hop flavour and a long, lingering, hop-dominated, citrus finish.
Hops: Bobek, Cascade, Goldings



Exmoor Stag 4.8% ABV

Exmoor Ales, Somerset. Est. 1980
This copper-coloured ale has aromas of hop resin and grainy maltiness, leading to a big malty character and rich fruitiness in the flavour, plus a long, dry finish.
Hops: Bobek, First Gold, Fuggles, Goldings



Gadds' Dark Conspiracy 4.9% ABV

Ramsgate Brewery, Kent. Est. 2002
This rich, smooth, mahogany-coloured porter is brewed with a blend of Belgian, English and German malts, plus Kent- and US-grown hops, combining to deliver a complex character.
Hops: UK Cascade, Willamette



Acorn Admiral IPA 5.0% ABV

Acorn Brewery, South Yorkshire. Est. 2003
Back in 2005, this rich golden beer was this brewery's first single-hopped IPA. The hop variety used imparts a citrusy and resinous flavour, with subtle malt notes balancing the hop flavours.
Hops: Admiral



Dorset Durdle Door 5.0% ABV

Dorset Brewery, Dorset. Est. 1995
This rusty-golden beer has a hoppy aroma, with marmalade hints leading to warm caramel notes in the full-bodied, clean-tasting flavour, complemented by a moderately dry finish.
Hops: Cascade, First Gold, Summit



Hook Norton Haymaker 5.0% ABV

Hook Norton Brewery, Oxfordshire. Est. 1849
This bronze-coloured, distinctive seasonal beer has a full, hoppy, fruity aroma, with a rich, slightly sweet flavour, leading to a finish full of fruit and hop flavours.
Hops: Challenger, Fuggles, Goldings



Hop Union Moose River 5.0% ABV

Hop Union Brewery, Bristol. Est. 2007
This golden APA has a sweet citrus aroma, leading to a crisp grapefruit flavour, balanced by undertones of caramel, with a zesty, fruity character through to the finish.
Hops: Centennial, Mosaic



Kirkstall Dissolution IPA 5.0% ABV

Kirkstall Brewery, West Yorkshire. Est. 2011
This classic IPA is pale golden, with its smooth caramel flavour balancing the resolute, intensely hoppy kick and citrus finish delivered by the blend of US hops.
Hops: Centennial, Chinook, Columbus, Eureka



Lymestone Ein Stein 5.0% ABV

Lymestone Brewery, Staffordshire. Est. 2008
This blond beer delivers gentle biscuit aromas which build towards a subtle citrus note burst, resulting in a well-balanced continental-style character, with a smooth, bitter finish.
Hops: Hersbrücker, Sovereign



Nethergate Old Growler 5.0% ABV

Nethergate Brewery, Suffolk. Est. 1986
This dark, complex and satisfying beer is based on a 1750s porter recipe, with a distinctive blend of roast malts and chocolate, a dominating fruit flavour and liquorice hints.
Hops: Challenger, Sovereign



Bays Devon Dumpling 5.1% ABV

Bays Brewery, Devon. Est. 2007
This strong golden ale has a unique fresh hop character throughout, delivering an inviting aroma and full flavour, with its balanced sweetness helping to provide a smooth character.
Hops: Northern Brewer, Sovereign



Keltek Miners Gold 5.1% ABV

Keltek Brewery, Cornwall. Est. 1997
This toffee-coloured beer has an aroma reminiscent of fresh bread and hints of zesty orange peel, leading to a delightfully refreshing blend of spicy and subtle citrus flavours.
Hops: Cascade, Perle



Moorhouse's Pendle Witches Brew 5.1% ABV

Moorhouse's Brewery, Lancashire. Est. 1865
This amber-coloured premium beer has a bold, full malty flavour, enhanced by spicy fruit notes and balanced by a crisp, fruity character in its lasting finish.
Hops: Progress



Grainstore Rutland Beast 5.3% ABV

The Grainstore Brewery, Rutland. Est. 1995
This deep-mahogany-coloured beer has citrus and dried fruit notes, with a good balance between hop bitterness and malty sweetness, leading to a robust, fruity finish.
Hops: Bramling Cross, Challenger, Fuggles



Green Jack Gone Fishing 5.5% ABV

Green Jack Brewery, Suffolk. Est. 2003
This amber-coloured beer is a traditional strong ale in style, with a fruity and malty aroma, leading to a balanced malt and hop flavour, with a subtle sweetness emerging in the long finish.
Hops: Magnum, Spalt Select



Redemption Big Chief 5.5% ABV

Redemption Brewery, Tottenham. Est. 2010
This golden IPA has plenty of tropical citrus and floral notes in the aroma, with flavours of marmalade, citrus and lychee, plus hints of honey and nectar, leading to a rounded, bitter finish.
Hops: First Gold, Motueka, Nelson Sauvin



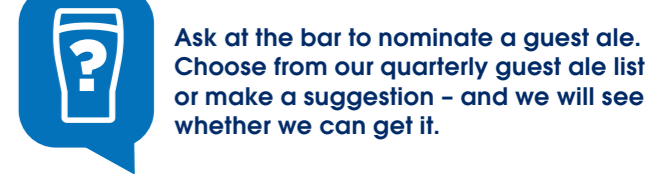
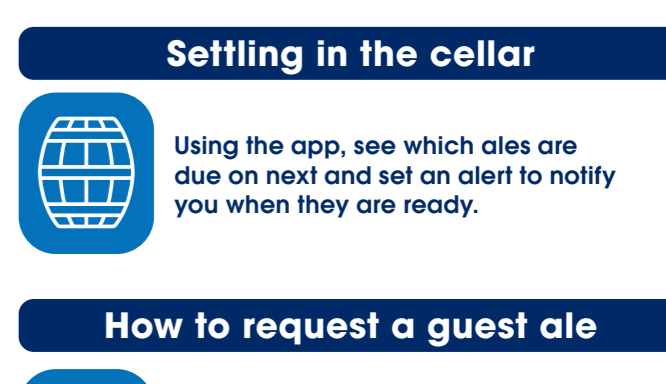
REAL-ALE TYPES



ALLERGEN AND NUTRITIONAL INFORMATION

This can be found on our customer information screen, website and Wetherspoon app.
Subject to local licensing restrictions and availability at participating free houses. Photography/illustration is for guidance only. © J D Wetherspoon plc reserves the right to withdraw/change offers (without notice), at any time. See main menus and customer information screen for allergen information, symbol explanations and additional details of our terms and conditions.

All guest ales are part of the includes-a-drink range.



Making the most of real ale on the app

Ales to the table?

As well as ordering ales to your table, you can use the Wetherspoon app to search for a pub, book a hotel and save your favourites. Download the Wetherspoon app or scan the QR code on your menu.

Ale-finder

Search by name or ale type to find the nearest Wetherspoon pub selling your favourite ale.

Settling in the cellar

Using the app, see which ales are due on next and set an alert to notify you when they are ready.

How to request a guest ale

Ask at the bar to nominate a guest ale. Choose from our quarterly guest ale list or make a suggestion – and we will see whether we can get it.